

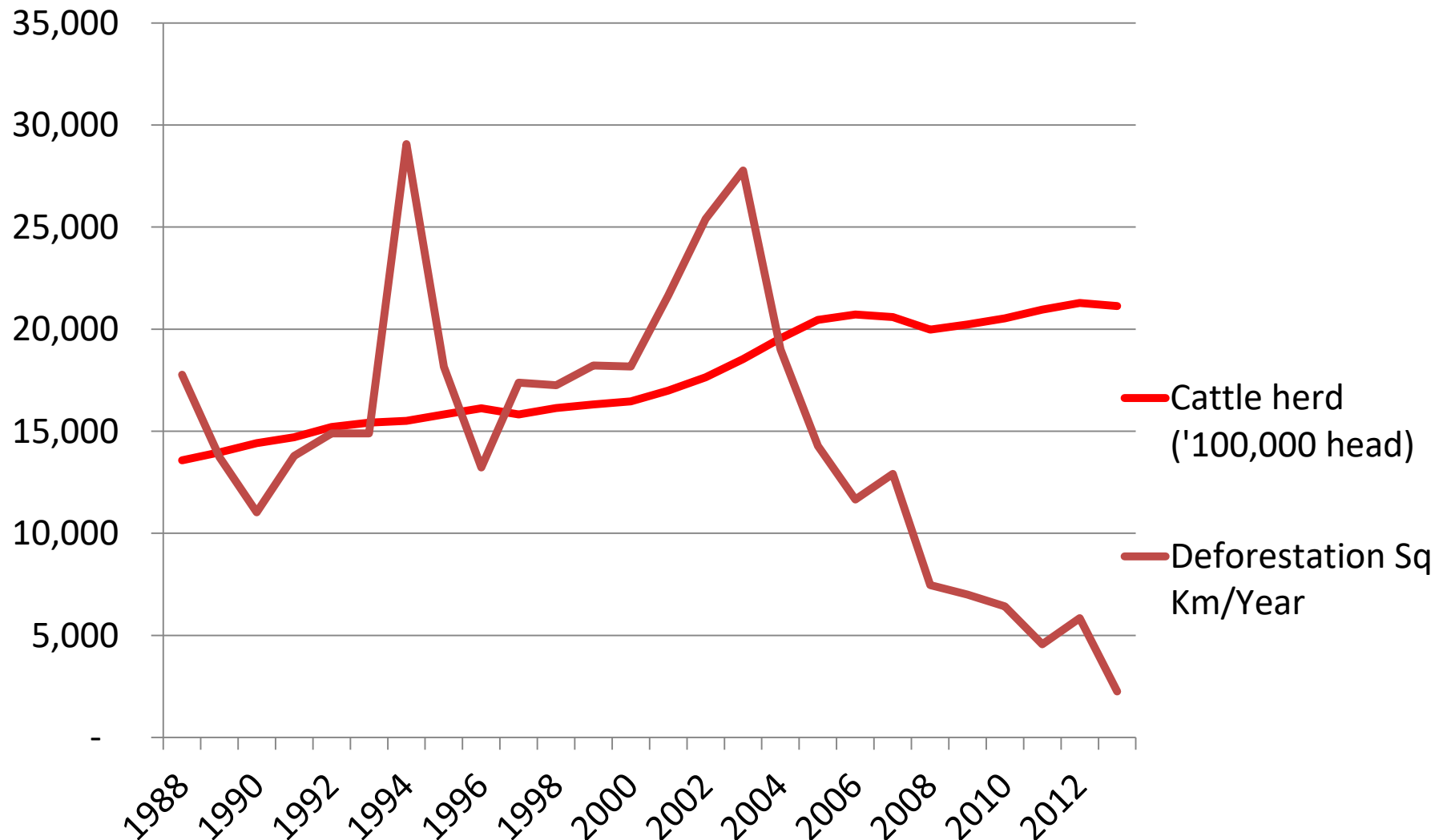
Will intensification of beef production deliver conservation outcomes in the Brazilian Amazon?

Frank Merry & Britaldo Soares Filho



July, 2017

Decoupling between deforestation and agriculture production?



No quite!



They just respond to the
same context



csr.ufmg.br/pecuaria

A quest for land



Cattle ranching is the cheapest means to claim the land



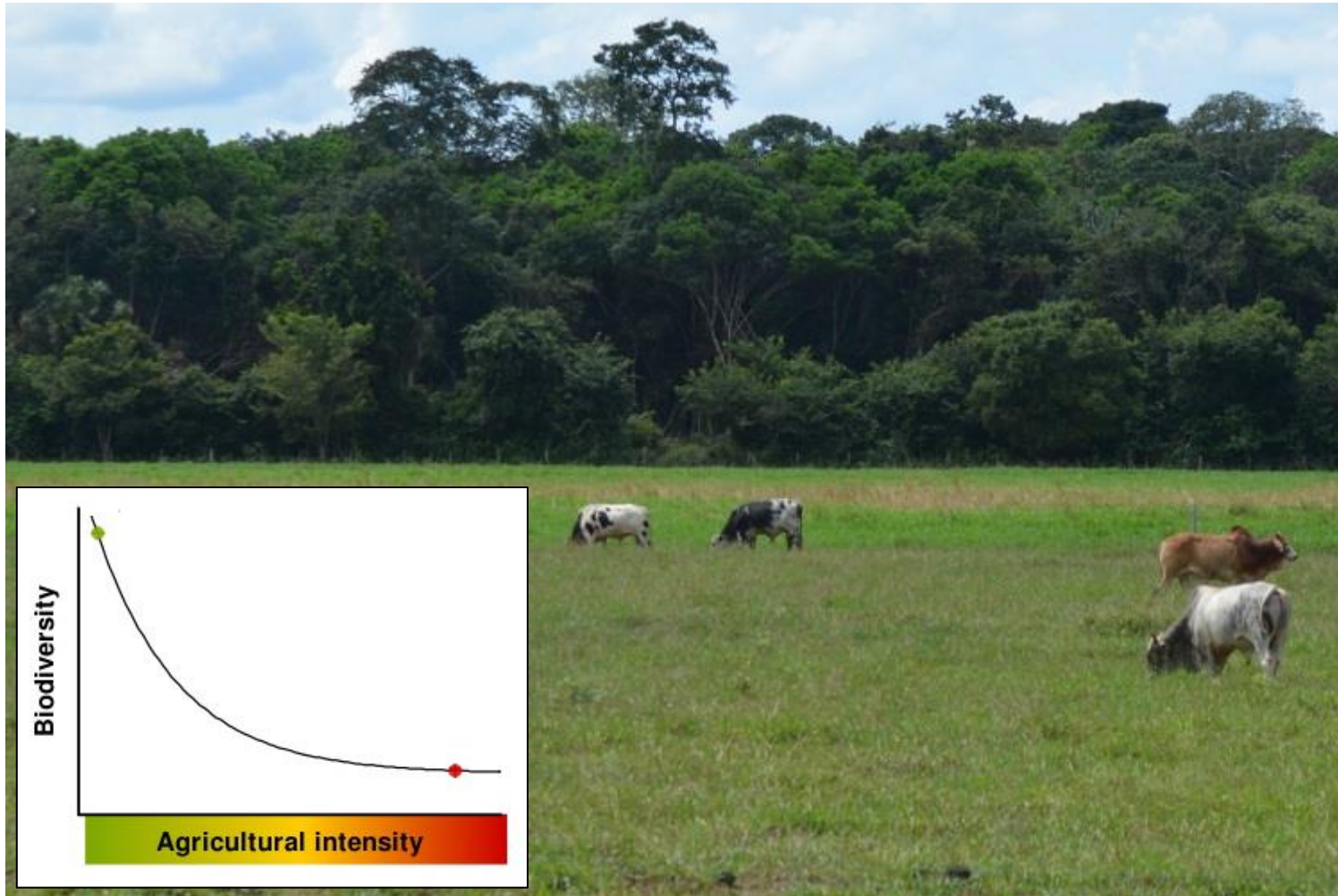
Cattle is a rather companion than a driver

However, a spate of publications are suggesting that cattle intensification could spare land for conservation



meet Brazil's new environmentalist

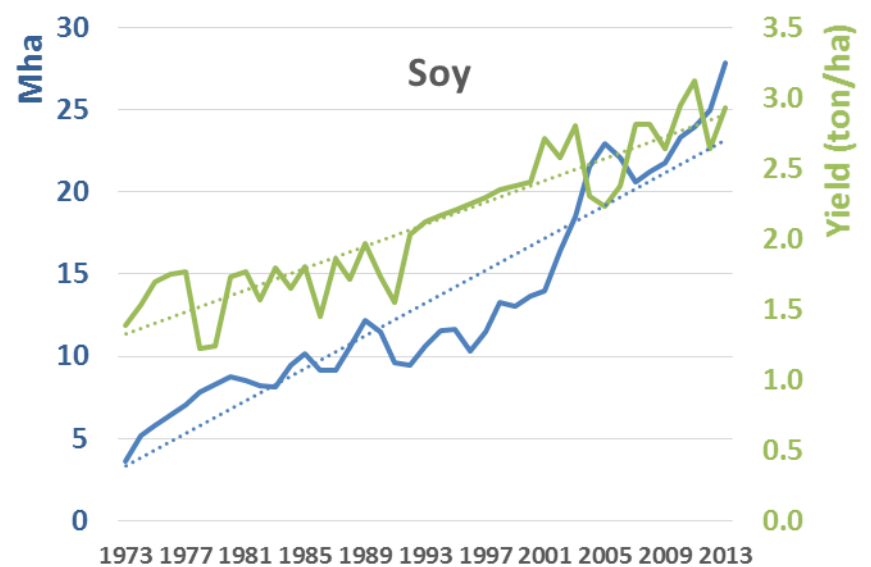
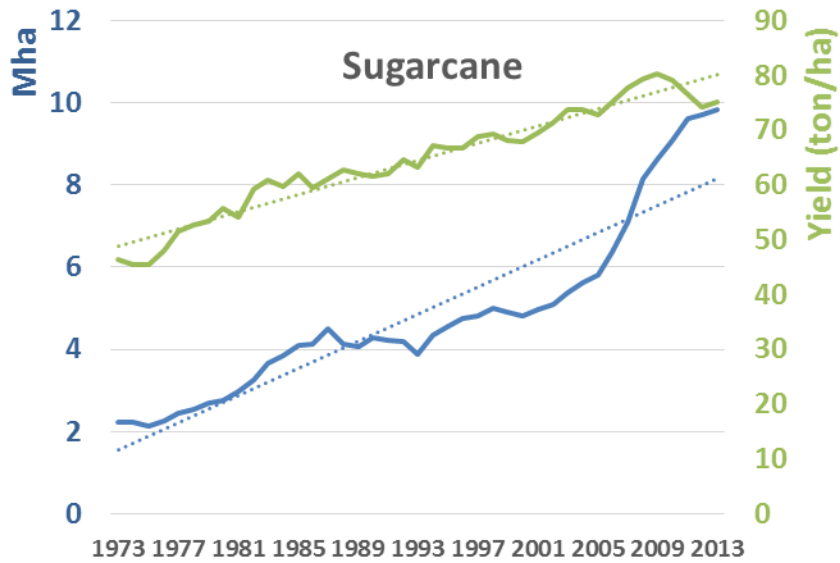
Based on the theory of land sparing



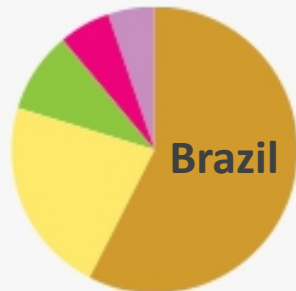
Does it work?

Green et al. 2005, Phalan et al. 2011

There is no evidence in Brazil

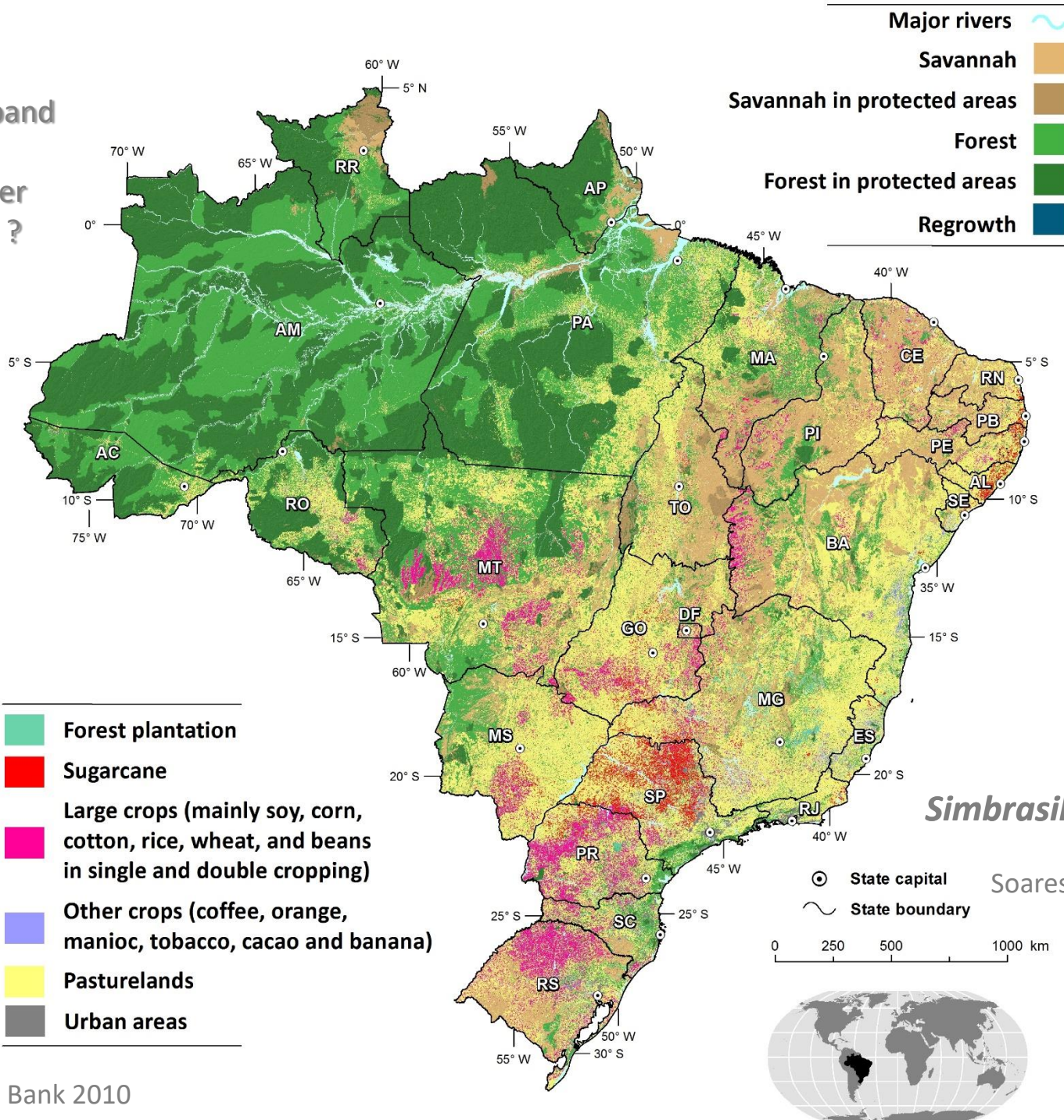


- Canada
- Paraguay
- United States
- Brazil
- Argentina
- Others

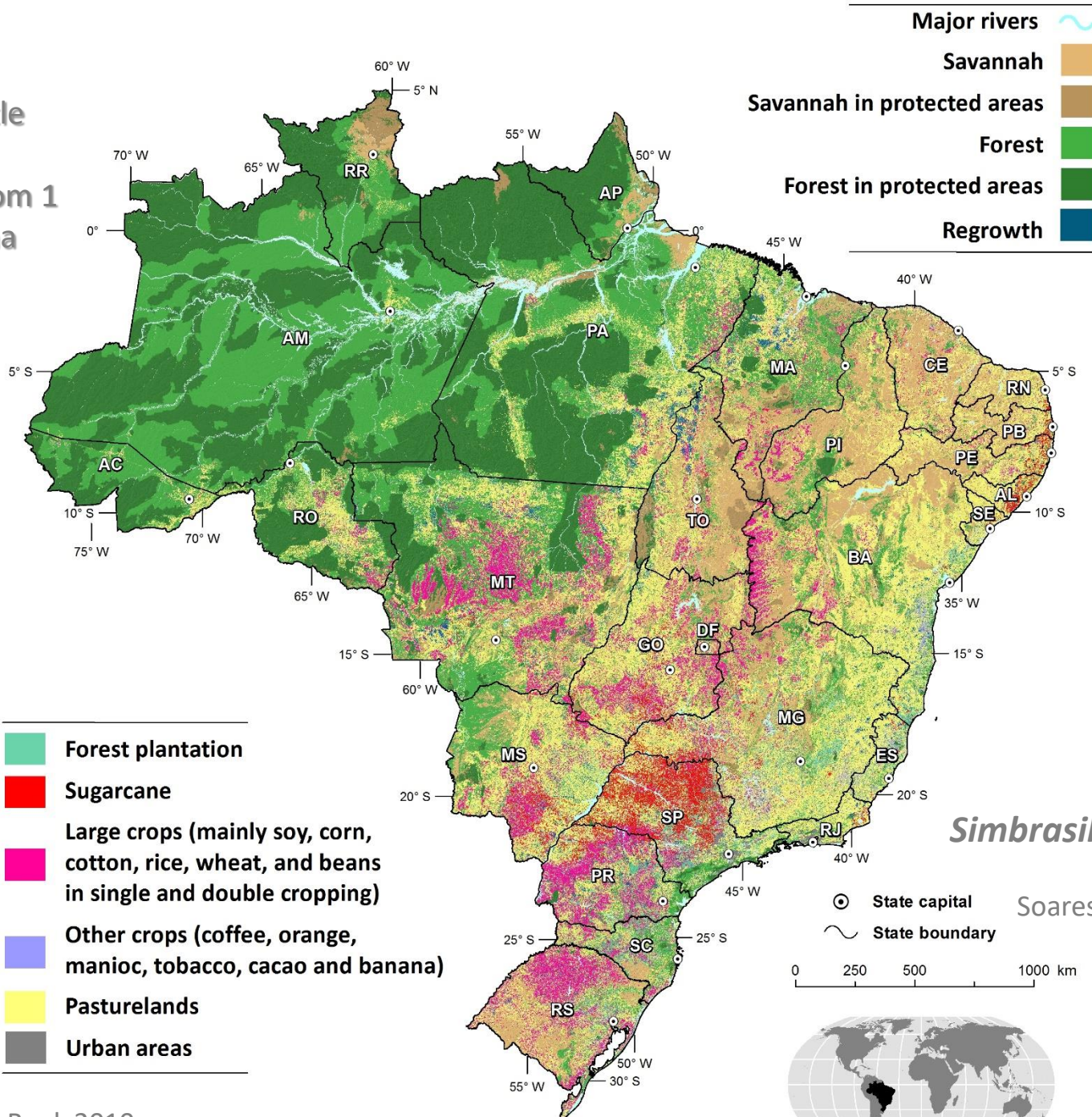


EU imports 35 million tons of soy and produces less than 1 million ton a year.

Can Brazil expand
its croplands
without further
deforestation ?



By 50% if cattle
ranching is
intensified from 1
to 1.5 head/ha



What are the problems?

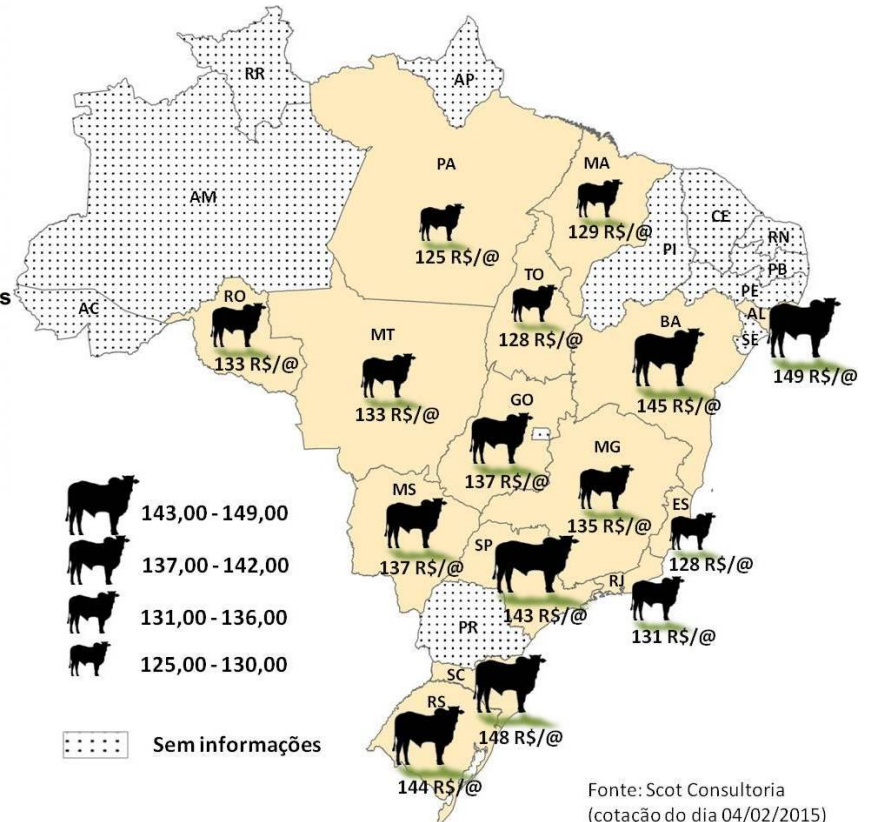
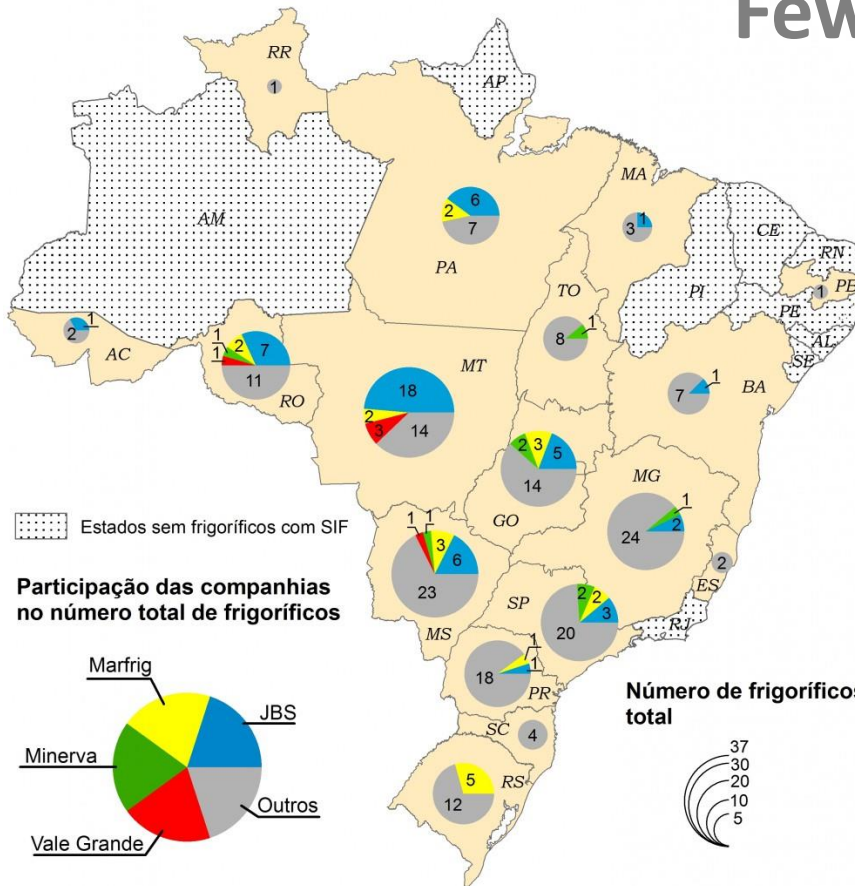
Ranching is a development priority for the Brazilian government.



Increase productivity but
also production

Subsidies create oversupply in the cow-calf sector.
Therefore, there are several market failures.....

Few companies control the market



Fonte: Scot Consultoria
(cotação do dia 04/02/2015)

We can not trust big companies



Federal Police
Operation:

“Carne fraca”

“Carne fria”

“Huge bribery
scheme”

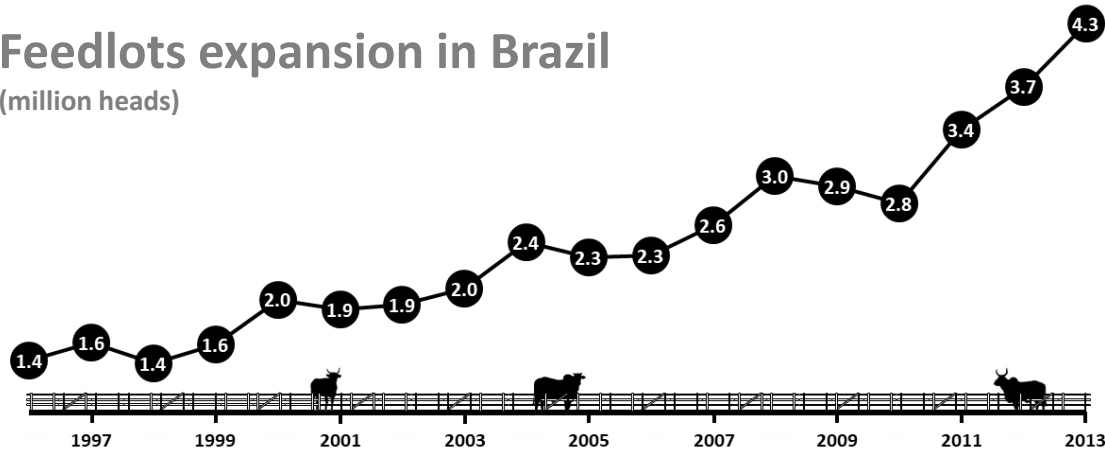
BNDES: Brazil's development bank
Nest egg or serpent's egg? (the Economist)

US\$ 9 billion to JBS

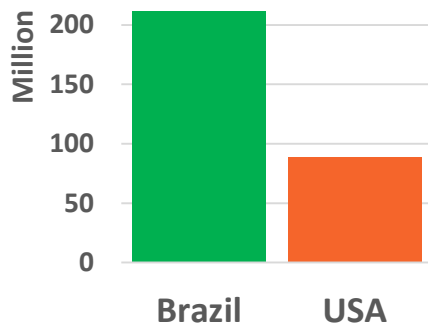
Market is already driving intensification

Feedlots expansion in Brazil

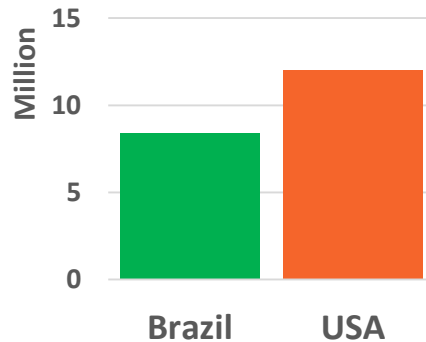
(million heads)



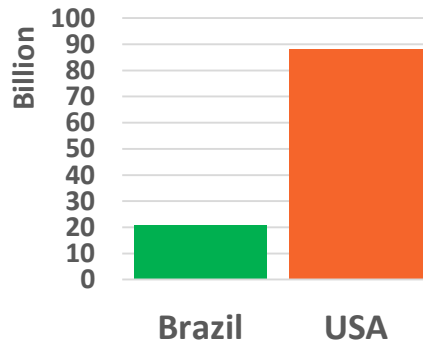
Heads



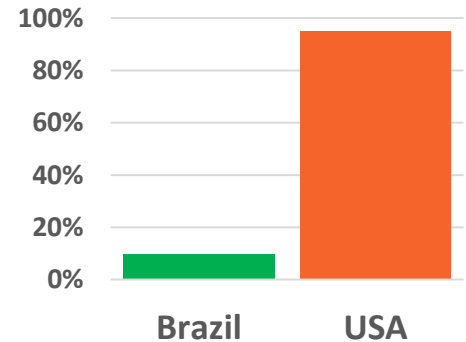
tons of beef



US\$



Finished in feedlots



CENÁRIOS PARA PECUÁRIA
DE CORTE **AMAZÔNICA**



csr.ufmg.br/pecuaria

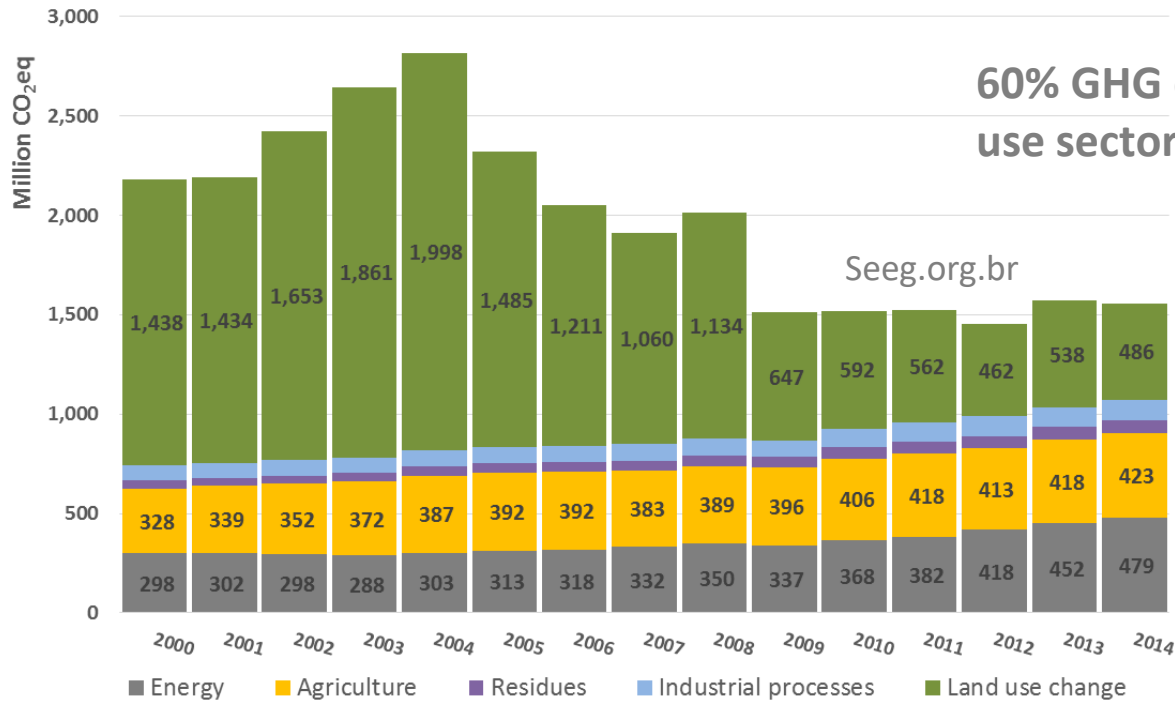
Tug of war

- Beef commodity roundtables – group agreement **impossible??**



A delaying action for companies?

Cattle ranching intensification is a policy for achieving Brazil's NDC



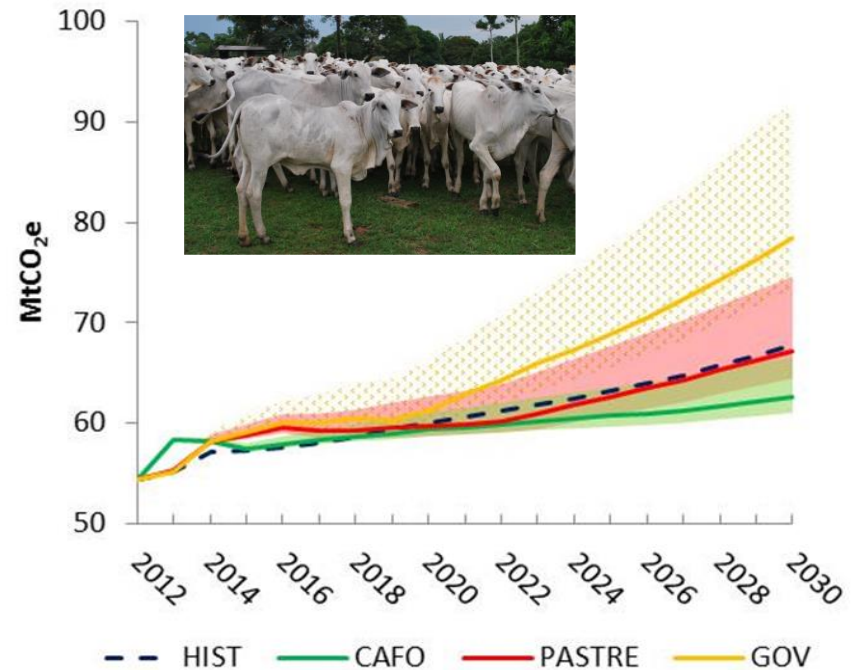
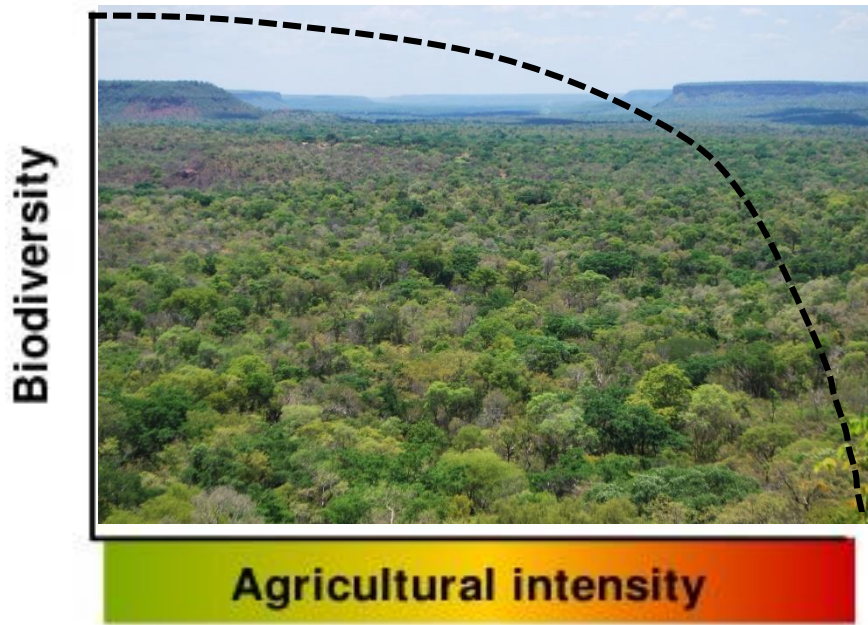
Opções de mitigação



88% in agriculture comes from cattle ranching

Restoration of 30 Mha of pasturelands, cornerstone of Brazil's ABC (15 Mha) and NDC (15 Mha) policies

Brazil's large scale pasture restoration will increase GHG emissions



Emission from cattle intensification scenarios for the state of Mato Grosso



Large impact on biodiversity as well

Conservation recommendations

- Blame and shame big companies.
- Secure conservation gains (e.g. protected areas, forest code, support environmental legislation, fight rural lobby).
- Stop subsidizing the sector (let them out of business).
- Conservation should set the limits and then intensification will follow, and **NOT THE OTHER WAY AROUND.**

Take the long view



“Tackling many of the environmental grand challenges will need large-scale investments in system models”

This what we do!!!!

Boyd, Nature, 2016

Muito Obrigado/Thank you

frank@conservation-strategy.org, britaldo@csr.ufmg.br,



Science in support of sound policy




Alexander von Humboldt
Stiftung/Foundation



Climate and
Land Use Alliance

FAPEMIG

 **CNPq**
Conselho Nacional de Desenvolvimento
Científico e Tecnológico

