

ALTITUDE

43°40'W

43°35'W

43°30'W

43°25'W

19°10'S

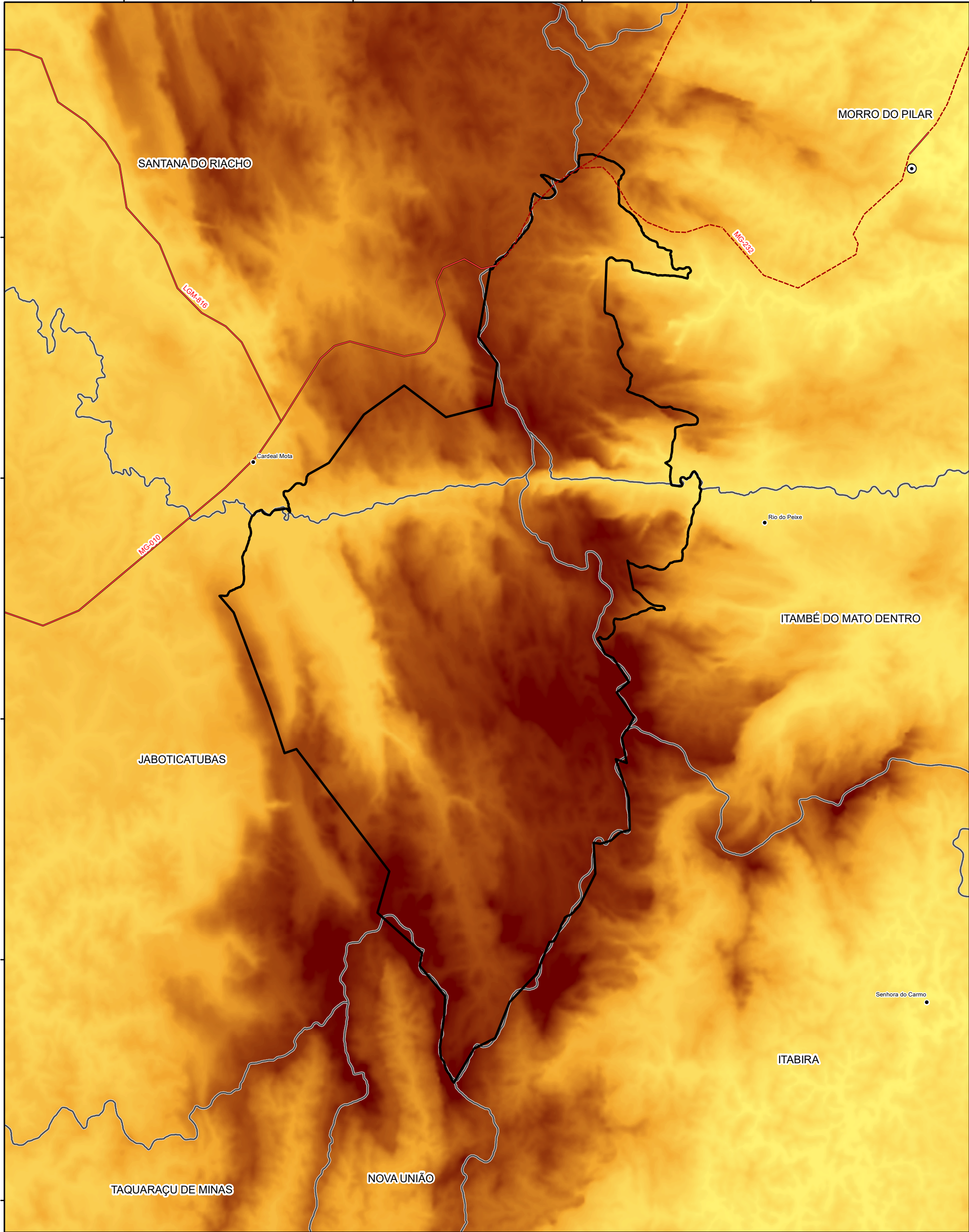
19°15'S

19°20'S

19°25'S

19°30'S

19°35'S



19°15'S

19°20'S

19°25'S

19°30'S

19°35'S

43°40'W

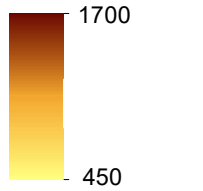
43°35'W

43°30'W

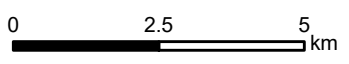
43°25'W

- ⊙ Sedes municipais
- Localidades
- Limites municipais
- Rodovias
- ⋯ Estradas vicinais
- PN da Serra do Cipó

Altitude (metros)



Fonte: Advanced Spaceborne Thermal Emission and Reflection Radiometer (ASTER) - Global Digital Elevation Model (GDEM) v.2



Projeção Universal Transversa de Mercator
Fuso 23S Datum SIRGAS 2000
Elaboração: CSR/UFMG
2018

